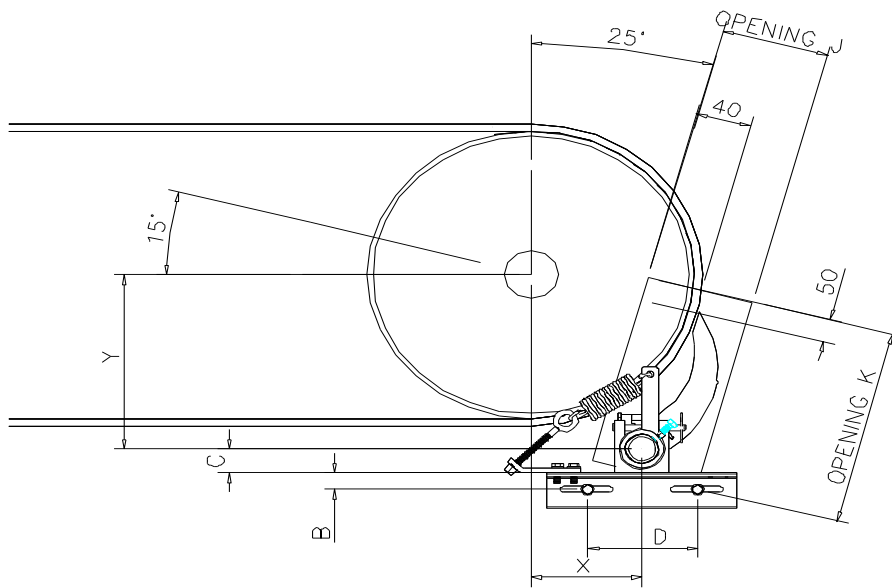


- Isolate all involved conveyors before starting the installation.
- The ideal position for the MUP2 pre cleaner is 15 degrees below the horizontal centre line of the head pulley, (using the cleaner shaft positioning table - Figure 1) to determine the coordinates to install the MUP2 pre cleaner.
- Draw a Vertical line from the centre of the pulley and mark the dimension (Y), Draw a line horizontal from (Y) using dimension (X) to establish the centre position of the cleaner shaft and mark.
- On an enclosed transfer chute, a cut out hole on both sides maybe required to allow the cleaner shaft to be passed through for the installation. (Refer Figure 3).



| PULLEY DIAMETER | X Position | Y Position |
|--------------------|---------------|---------------|
| 400 | 109 | 341 |
| 450 | 133 | 347 |
| 500 | 150 | 353 |
| 600 | 204 | 366 |
| 700 | 252 | 379 |
| 800 | 304 | 393 |
| 900 | 351 | 405 |
| 1000 | 399 | 418 |
| 1100 | 447 | 431 |

Figure 1

- Position the mounting brackets using a G Clamp, or scribe a horizontal line on the chute wall & weld/drill two 13mm holes for mounting. (Refer Figure 2)

| CLEANER SHAFT DIAMETER | DIM 'B' | DIM 'C' | DIM 'D' |
|------------------------------|------------|------------|------------|
| 48.3 | 35 | 50 | 200 |
| 60.3 | 35 | 52 | 200 |
| 76.1 | 35 | 63 | 200 |

Figure 2

| Head pulley diameter | “J” Dim | “K” Dim |
|----------------------|---------|---------|
| 250mm – 1000mm | 185mm | 400mm |
| 700mm - 1500mm | 185mm | 400mm |

Figure 3

- Pass the cleaner shaft across the face of the head pulley & position on the mounting angles; ensure the blade is centralized to the head pulley.
- Ensure that the mounting blocks are centered in the adjusting slots in the brackets and that the shaft is setup parallel to the head pulley. Place a suitable lever through the holes in the end of the shaft, rotate and hold the shaft until the blade is touching the belt, and that the blade contacts evenly across the full width of the belt.
- Using the locking bolts on the adjusting arms, rotate the shaft so that the blade is in contact with the belt and the tips are parallel to the head pulley and lock into position.
- Using a 19mm spanner, adjust the adjusting nut on the eye bolt of both sides of the cleaner brackets so that the Stainless Steel Spring has an equal space between each coil of 1mm.
- Check all remaining fasteners & locking bolts for security before testing.
- Remove Isolation tags.
- Operate the conveyor to ensure that the cleaner is working properly.
- For optimum performance, keep the 1mm spacing between the coils at all times, adjust as necessary after isolation.